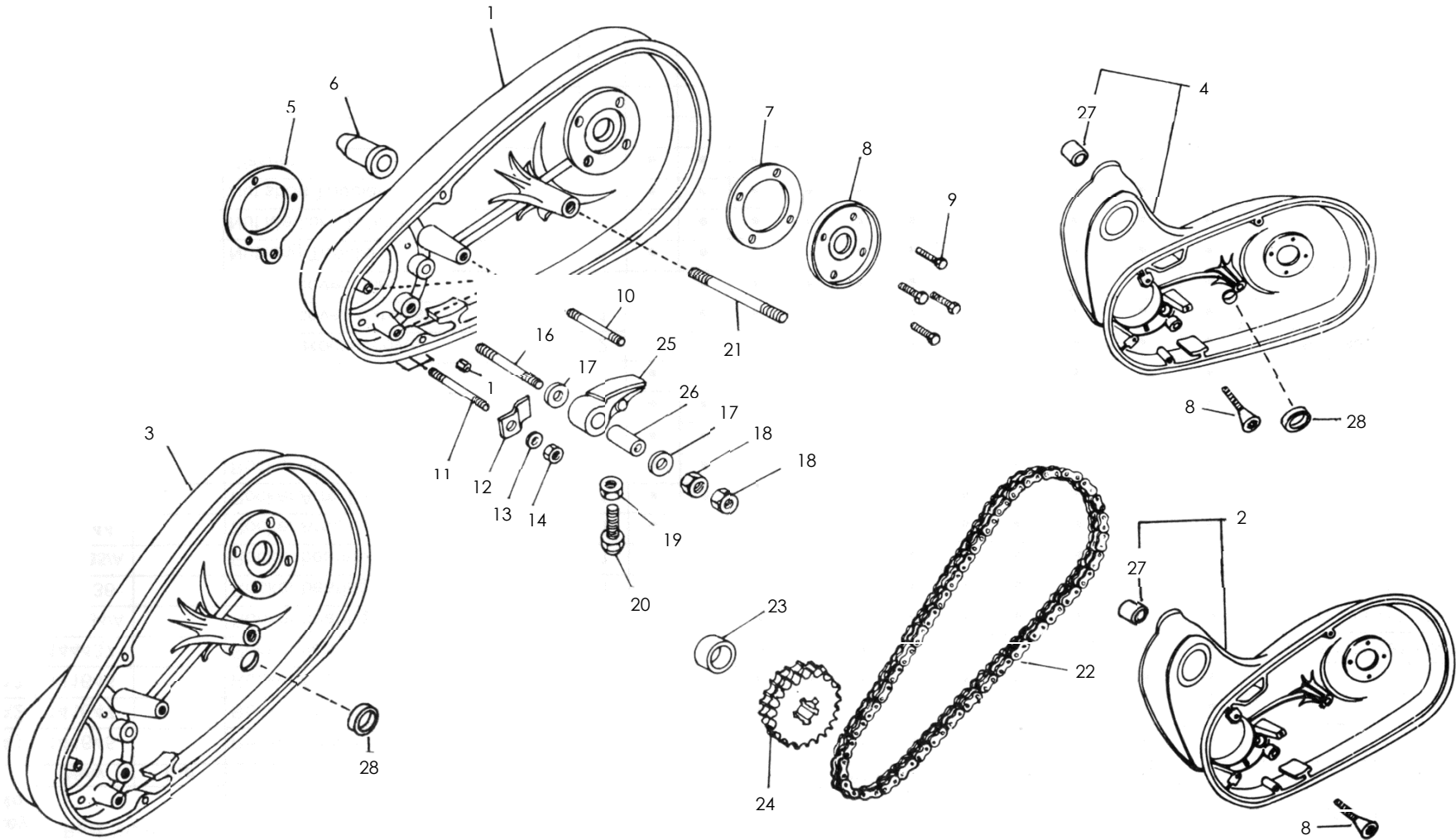


03 - 10 CHAIN CASE INNER



03 - 10 CHAINCASE INNER

Key No	Part Numbers		Description	Qty	Models										Remarks	price	
					350cc				500cc								
	K.Start 4 Speed				E.Start 4 Speed		K.Start 4 Speed		E.Start 4 Speed		5 Speed		Sixty 5				
	R/G	L/G			R/G	L/G	R/G	L/G	R/G	L/G	K.start	E.start	E.start				
New	Old																
1	111889		Chain Case Inner	1													28,400
2	560127/A		Chain Case Inner	1													36,800
3	510946		Chain Case Inner	1													28,400
4	145957/A		Chain Case Inner	1													36,800
5	144621		Gasket - Crank case to Chaincase	1													500
	560052		Gasket - Crank case to Chaincase	1													700
6	144752		Grommet	1													360
7	144624		Gasket - Oil Seal Adaptor	1													270
8	111888		Oil Seal Adaptor	1													1,890
9	140290		Screw - Oil Seal Adaptor	4													360
10	111334		Stud - Stator fixing	3													360
11	144286/A		Stud - Chaincase fixing	3												From OB 10062 E	300
12	111866		Retainer- Crankcase	3													180
13	140147		Washer- Shake proof	3													90
14	141051		Nut-for fixing Chain case	3												From 2BS512943 G	270
15	140278		Dowel pin - Chain case	1													180
16	144287/A		Stud -Chain Tensioner	1												From OB 10062 E	430
17	140437		Washer	2													50
18	140191		Nut(Inches)	2												Till OB 10061 E	140
	141051		Nut (Metric)	2												From 2BS512943 G	270
19	120521		Nut (Inches)	1													180
20	110201		Screw - Adjusting	1													320
21	140277		Stud, Chain case cover fixing (Inches)	1												Till 2E51437 C	670
	145163/A		Stud, Chain case cover fixing (Metric)	1												From 2B 512384 C	690
22	113007		Chain, Duplex	1													9,420
23	110056		Distance Piece - Engine Sprocket	1													930
24	110221		Engine Sprocket 25 T	1													7,980

